



บริษัท สยาม อินดัสเทรียล แมชชีนเนอรี จำกัด
SIAM INDUSTRIAL MACHINERY CO., LTD.

5/15 หมู่ 6 ถนนบางนา-ตราด กม.15 ต.บางโฉลง อ.บางพลี จ.สมุทรปราการ 10540 โทร 02-312-5300 #215 โทรสาร 02-312-5410

5/15 Moo 6 , Km 15 Bangna-Trad Highway, Bangchalong, Bangplee, Samutprakarn 10540 Tel 02-312-5300 #226 Mr.Kirachai (Sales)

Contact us :	Mr.Kirachai Lengudomlap	Sales Department	M : 061-269-9269	Email : kirachai@siamind.co.th
				Email : kirachaijob@gmail.com



Pumps

• End Suction Centrifugal Pump

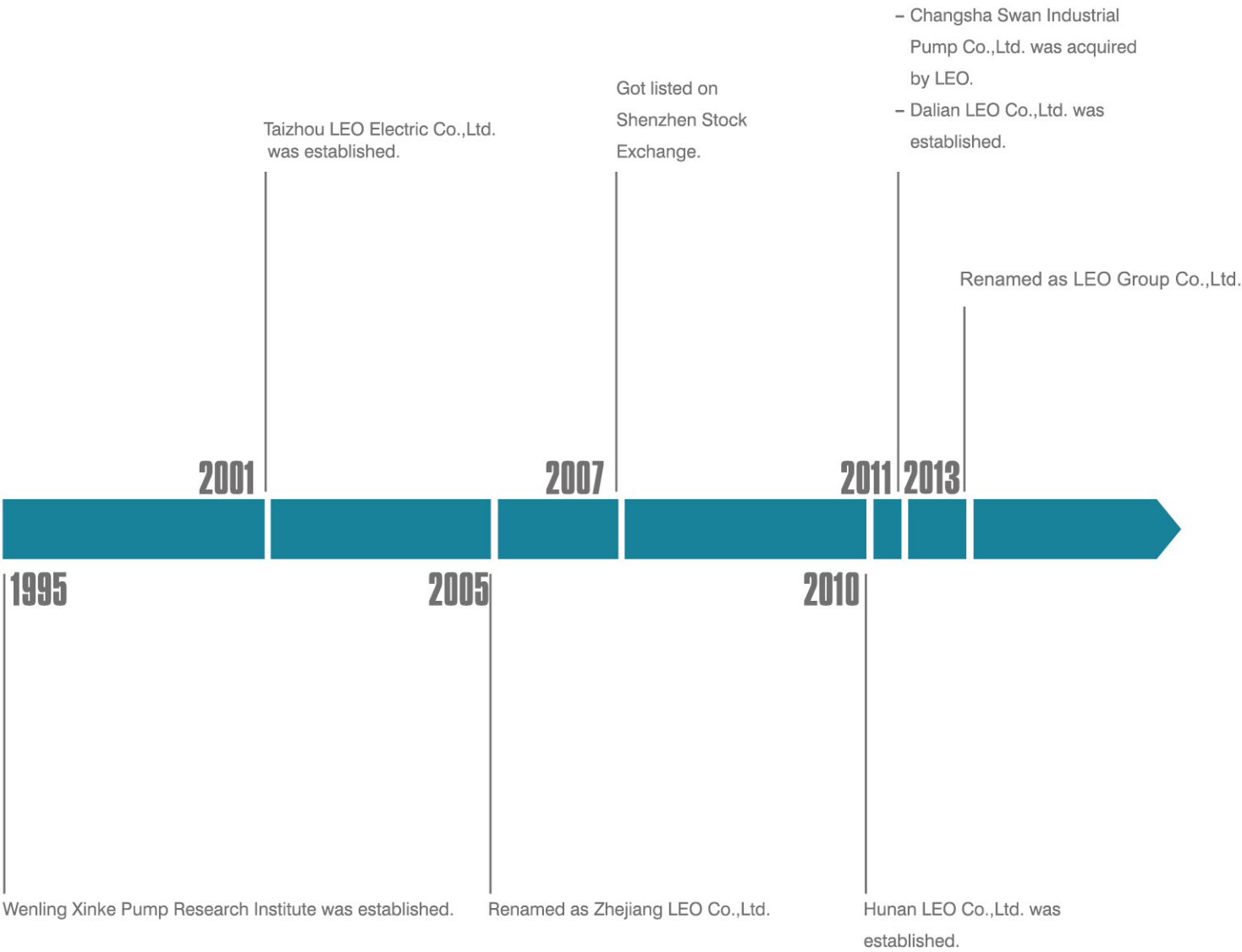
www.leogroup.cn



www.leogroup.cn

LEO GROUP PUMP(ZHEJIANG) CO.,LTD.

HISTORY



TO KNOW LEO

LEO Group (got listed in Shenzhen Stock Exchange with stock code 002131) is a national high-tech enterprise engaged in R&D, design , manufacture, sales and service of all series pump. LEO is the first listed company in Chinese pump industry, one of the drafters of pump industry standard and the vice president of drainage and irrigation machinery branch of China Agricultural machinery industry association as well. It is mentionable that LEO has the only state-authorized technical center in this industry.

Our products have been sold to over 120 countries and regions, such as Europe, North America, Central &South America, Southeast Asia, Middle East, Africa, Oceania ,etc., which play a crucial role in water conservancy , water resources, electric power construction, petrochemical industry, mining, metallurgy, fire-fighting, HVAC(Heating, Ventilation and Air Conditioning), agricultural irrigation, civil water supply and drainage, etc.

LEO has currently two industrial groups respectively for industrial and civilian applications. With five manufacturing bases in Wenling of Zhejiang, Xiangtan of Hunan, Changsha of Hunan, Wuxi of Jiangsu and Dalian of Liaoning, LEO possesses a solid foundation to become a world-class pump and system solution provider rapidly.

With over 70 years' professional technology, LEO will continue her consistent creativity and development ability in each pump for human's health.



NUMEROUS MEMBERS, ONE FAMILY

Based on market segment, LEO's pump business is divided into 5 fields, namely water conveyance & water resources, power station, petrochemical industry, mining & metallurgical industry and civilian applications. For each field there's a professional manufacturing base with relevant professional sales teams. Four subsidiary companies – Wuxi LEO Xi Pump, Changsha LEO Swan Pump, Dalian LEO Huaneng Pump and Hunan LEO Pump are all well-known industrial pump manufacturers in their own fields. With over 70 years' industrial pump manufacturing experience and extraordinary comprehensive strength, LEO becomes a leading company among all industrial pump manufacturers in China.



Pump Manufacturing Base for Domestic and Commercial Applications (Wenling City, Zhejiang Province)

It is the core base for R&D, manufacturing, sales and service of domestic and commercial pumps for family water supply, pipeline boosting, garden and field irrigation, HVAC, etc.

The leading products include peripheral pump, jet pump, centrifugal pump, garden submersible pump, fountain pump, pool pump, domestic lifting station, gasoline engine pump, diesel engine pump, submersible pump, submersible borehole pump, submersible sewage pump, stainless steel vertical multistage pump, etc.

The product range covers 15 series with over 2,000 specifications, which are well sold in more than 120 countries and regions. The base has established steady cooperative relationships with world-class pump manufacturers, importers, dealers and hypermarkets.



Pump Manufacturing Base for General Industrial Pumps (Xiangtan City, Hunan Province)

It is the most important base for industrial pumps.

The products are mainly used in mine, metallurgy, goal washing, FGD, municipal water, etc.

A world-class pump testing center with testing power up to 12,500 kW realizes high precision tests for real pumps which are used for power station, water conservancy and water resources, petrochemical industry, mining and metallurgical industry.



Pump Manufacturing Base for Water Conservancy & Water Resources (Wuxi City, Jiangsu Province)

This base grew out of Wuxi Xi Pump Manufacturing Co.,Ltd, a well-known manufacturer for water conservancy.

The base is specialized in production of large and medium-sized pumps for urban water supply and drainage, field irrigation, water conservancy projects and large water diversion projects. The main products cover 8 series with 995 specifications.

With great honor, the model 300HW-8 mixed-flow pump won the first national quality award of Chinese pump industry. As a main supplier, the base provides large pumps for South-to-North Water Diversion Project, a national key project.



Pump Manufacturing Base for Petrochemical Industry (Dalian City, Liaoning Province)

The predecessor of this base is Dalian Huaneng Corrosion-Resistant Pump Works, who's a well-known pump manufacturer in petrochemical industry.

The base is specialized in production of petrochemical pumps for the upstream industry of oil and gas (including exploration, exploitation and storage) and downstream industry of petrochemicals (including crude oil refinery, heavy chemical industry, fine chemistry and coal chemical industry).

The base focuses on design and manufacture of 30 series (OH, BB, VS, etc.) of petrochemical pumps with over 3,000 specifications, which are in accordance with API and ISO standard. The production of large crude oil long distance pipeline pump (BB1 and BB2) and HTHP overloaded pump (BB3 and BB4) is available. LNG cryo-pump is already in development.

The base is Class A supplier of CNPC and qualified sub supplier of Shenhua Group.

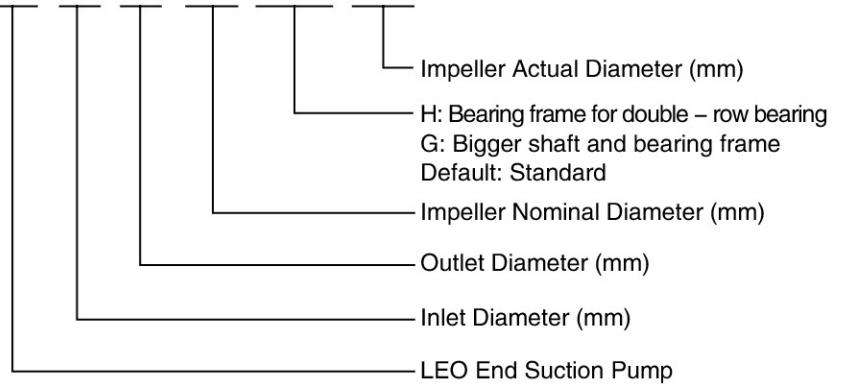


Applications

- Water supply systems
- Pressure boosting
- Heating systems for commercial buildings and district heating
- Cooling plants for industrial processing and air-conditioning units
- General transport for industrial processes
- Fire fighting system

Identification Codes

LEP 50-32-130 H(G)/139



No.	Part	Material
1	Pump casing	Cast Iron Ductile Iron 304/316
2	Impeller nut	
3	Wear ring	
4	Impeller	Brass/Bronze Cast Iron 304/316
5	Casing cover	
6	Shaft spacer	
7	Mechanical seal	
8	Seal cover	
9	Rubber slinger	
10	Bearing frame	
11	Shaft	304/316/1045

No.	Part	Material
12	Bearing	
13	Bearing cover	
14	Support foot	
15	Packing sleeve	Bronze
16	Packing seal cage	
17	Gland packing	
18	Gland cover	
19	Casing gasket	
20	Nut	
21	Nut	
22	Nut	

No.	Part	Material
23	Key	
24	Key	
25	Bolt	
26	Oil nipple	
27	Oil seal	
28	Nut	
29	Washer	
30	Washer	
31	Oil scale	
32	Oil cover	
33	Bearing Cover Gasket	

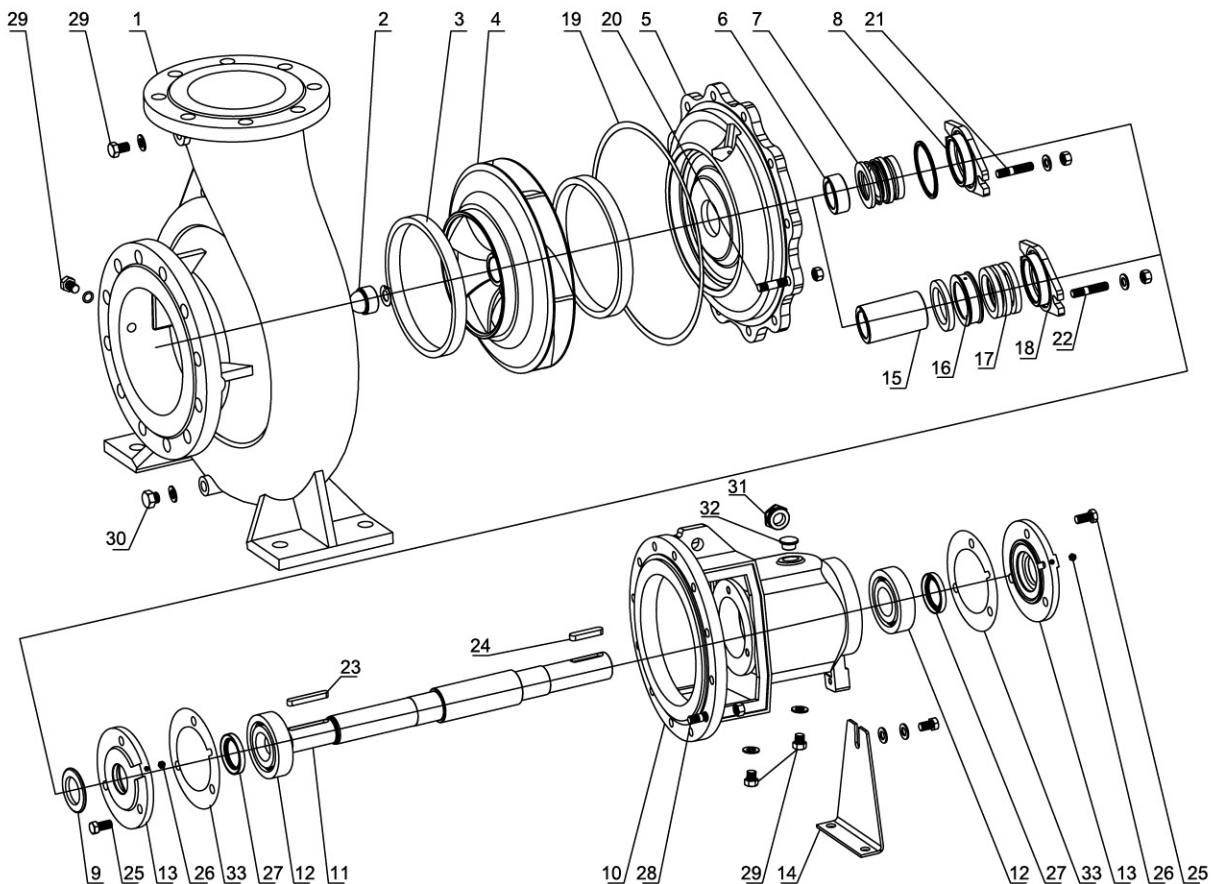
Working Conditions

- Pump design complies to BS EN 733/DIN 24255 standard
- Conveying medium: Low viscosity, non-inflammable and non-explosive liquids not containing solid particles or fibers
- Speed: 1450/2900 rpm at 50 Hz, 1750/3500 rpm at 60 Hz
- Flow range: 0.5 - 440 l/s
- Head range: 2 - 152 m
- Max. liquid temperature: 105°C
- Liquid pH value: 4 - 10
- Max. operation pressure: 10 bar, 16 bar on request

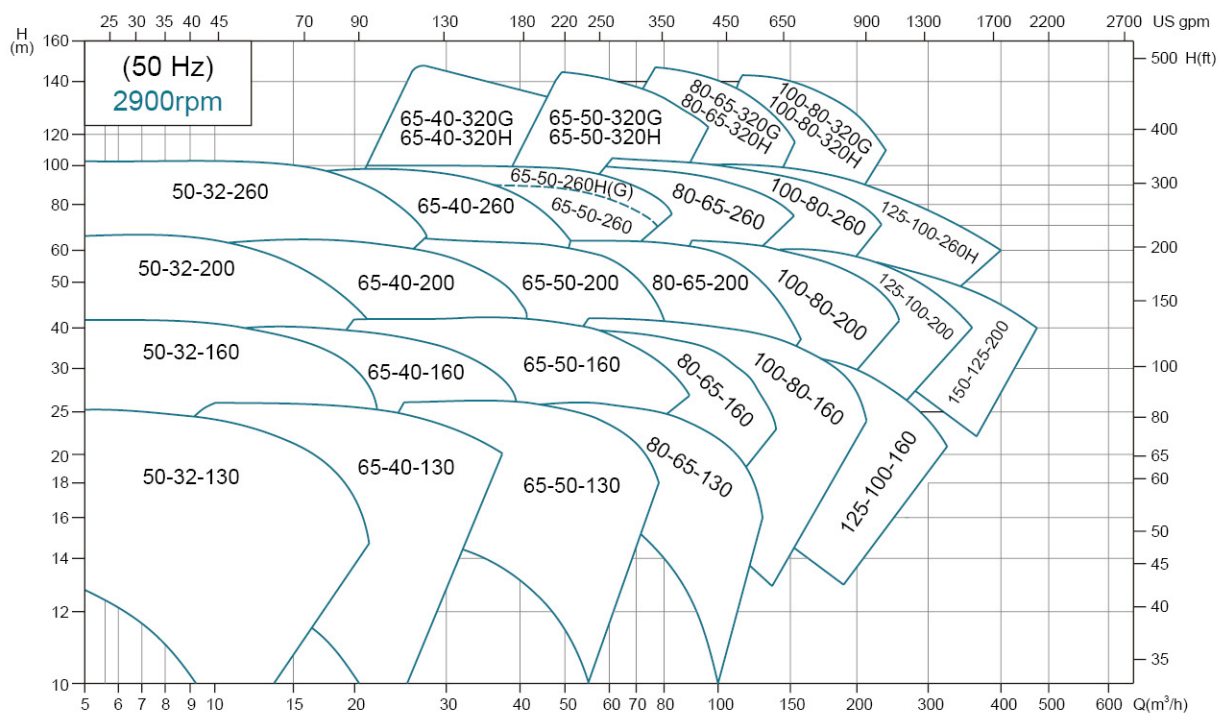
Design & Structure

Design	Performance and dimensions referring to the European standard BS EN733/DIN24255
Structure	Horizontal, Axial End-Suction, Single-Stage, Single-Suction, Volute Casing, Back pull-out
DN(mm)	Inlet: 50-350 Outlet: 32-300
Flange	ISO7005.2 ; DIN2501 PN16 ; GB/T17241.6 PN1.6

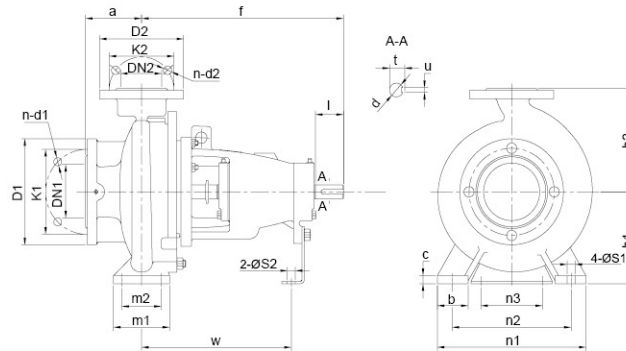
Materials Table



Characteristic Curves



Installation Dimensions



Model	Bearing ID (mm)	DN2	DN1	a	f	h1	h2	b	c	n3	m1	m2	n1	n2	S1	S2	w	d	l	t	u	Weight (Kg)				
LEP50-32-130	25	32	50	80	360	112	140	50	14	100	100	70	190	140	14	14	267	24	50	27	8	29				
LEP50-32-160						132	160															35				
LEP50-32-200						160	180															47				
LEP50-32-260						180	225															65				
LEP65-40-130	25	40	65	100	360	112	140	50	14	100	100	70	210	160	14	14	267	24	50	27	8	31				
LEP65-40-160						132	160						34													
LEP65-40-200						160	180						45													
LEP65-40-260(H)						180	225						61													
LEP65-40-320	35	40	65	125	470	200	250	65	14	110	125	95	345	280	14	14	342	32	80	35	10	94				
LEP65-40-320(H)						200	250															107				
LEP65-40-320G	45	50	65	125	526	200	250	65	14	100	100	70	240	190	14	14	367	42	110	45	12	105				
LEP65-50-130	25					132	160															35				
LEP65-50-160						160	180															39				
LEP65-50-200						160	200															49				
LEP65-50-260(H)						180	225															68				
LEP65-50-260G	35	50	65	100	360	180	225	65	14	110	125	95	320	250	14	14	344	32	80	35	10	65				
LEP65-50-320(H)						225	280															113				
LEP65-50-320G	45	50	65	125	526	225	280	65	14	100	125	95	345	280	14	14	367	42	110	45	12	105				
LEP80-65-130	25					160	180															41				
LEP80-65-160						160	200															47				
LEP80-65-200(H)						180	225															55				
LEP80-65-200G	35	50	65	100	465	180	225	65	14	110	125	95	320	250	14	14	339	32	80	35	10	60				
LEP80-65-260						200	250															87				
LEP80-65-320(H)						225	280															110				
LEP80-65-320G						225	280															120				
LEP100-80-160	25	80	100	125	530	180	225	65	14	110	125	95	320	250	14	14	367	42	110	45	12	120				
LEP100-80-200	35					180	250															76				
LEP100-80-260(H)						200	280															95				
LEP100-80-320(H)						250	315															118				
LEP100-80-320G	45	80	100	125	526	250	315	80	16	110	160	120	400	315	18	18	367	42	110	45	12	130				
LEP100-80-400						280	355															160				
LEP125-100-160	35	100	125	140	530	200	250	80	15	110	160	120	360	280	18	18	370	42	110	45	12	87				
LEP125-100-200	35					200	280															84				
LEP125-100-260(H)						225	280															102				
LEP125-100-320						250	315															118				
LEP125-100-400	45	125	150	160	530	280	355	100	20	110	200	150	500	400	23	23	370	42	110	45	12	176				
LEP150-125-200	35					250	315															112				
LEP150-125-260						250	355															117				
LEP150-125-320						280	355															155				
LEP150-125-400	45	150	200	180	530	315	400	100	18	110	200	150	550	450	23	23	370	42	110	45	12	178				
LEP150-125-500	55					355	450						300													
LEP200-150-200	35					555	280						132													
LEP200-150-260	45					250	355						163													
LEP200-150-320						280	400						170													
LEP200-150-400						315	450						207													
LEP200-150-500						670	375						330													
LEP250-200-260	45	200	250	180	555	315	450	120	20	110	220	170	600	480	28	28	392	42	110	45	12	219				
LEP250-200-320	55					315	480															286				
LEP250-200-400						335	480		328																	
LEP250-200-500	65	200	250	200	720	425	560	100	22	140	200	150	660	560	23	19	515	60	140	64	18	450				
LEP300-250-320	55	250	300	220	691	355	520	150	26	110	250	200	660	510	28	14	525	60	140	51	14	366				
LEP300-250-400					682	400	560										396									
LEP300-250-500	65	250	300	200	720	450	670	120	32	140	240	190	750	650	23	19	515	60	140	64	18	550				
LEP350-300-400	65	300	350	300	720	425	670	120	30		250	190	760	660	30	19	515	60	140	64	18	550				