



## User - Oriented. High - Quality Products



### Our High Quality Products Can Meet Your Satisfactions

UNOZAWA was established in 1899 and we have been supplying various excellent products for more than a

century. We have earned a reputation for superior products and responsiveness to customer needs. The products have been exported in quantities to the world. We are confident that our high quality products can meet your satisfaction.

#### Main Products

1. Dry vacuum pumps
2. Rotary blower (Roots type)
3. Rotary vacuum pumps (Roots type)
4. Mechanical booster
5. Water ring vacuum pump
6. Vacuum de-aerator
7. Reciprocating vacuum pump

### BASED ON LONG ACCUMULATED TECHNONOGY.

Unozawa was established in August 1899 and over century since then, the Company, as specializing manufacturer of pumps and blowers, has been manufacturing various excellent products. Beginning of the foundation, the Company manufactured steam pump, boiler feed pump and condensate pump, liquid ring vacuum pump reciprocating vacuum pump and pneumatic conveyor, etc.

In 1953, the positive displacement blower and vacuum pump (Roots type) were developed by the Company.

Unozawa has developed the dry vacuum pump in 1983, which is unparalleled in the world, in advance of other manufacturers. Further, this pump has been exporting to various companies in the USA, EC and Asian countries. Furthermore, the dry vacuum pump has been finding rapidly spreading fields of application, and is supplied not only fine chemical industries but also to many other general industries extensively. The products have been exported in quantities to the world. We are confident that our products, based on the traditional pioneer and long accumulated technological power of the Company, will contribute to the society in the 21st century and also continue expansive steps forever.

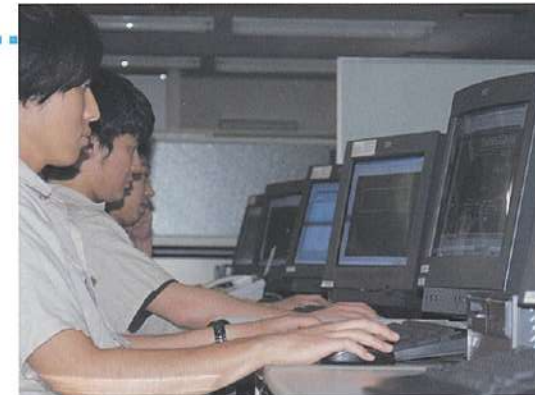
*T. Unozawa*

Torao Unozawa  
President



## Technical Division

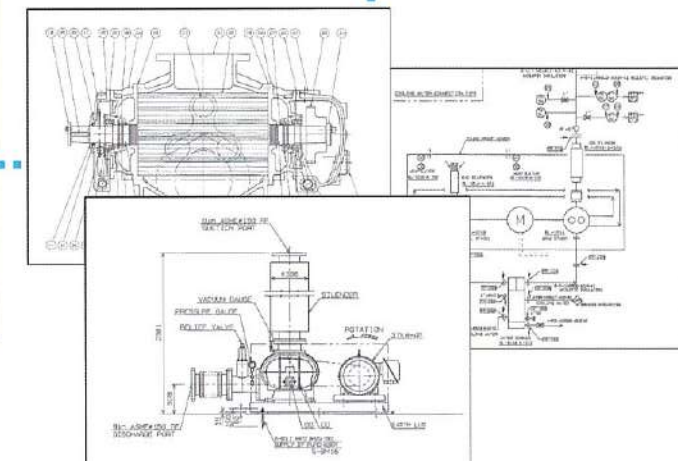
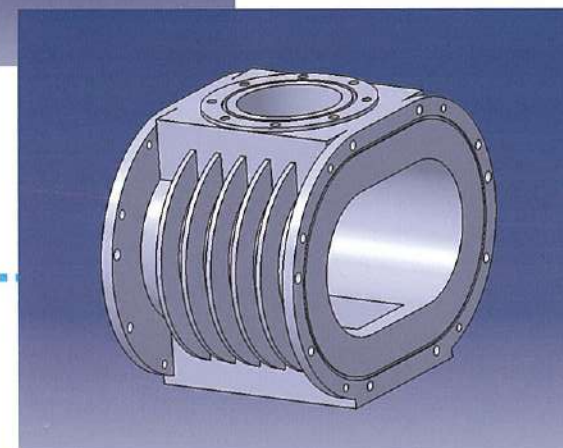
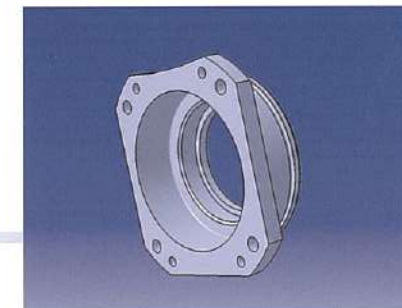
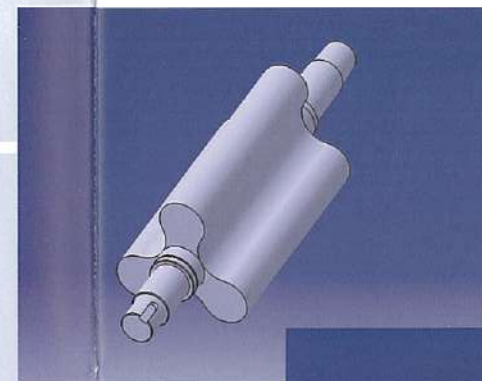
We have been manufacturing featuring liquid pump, compressor and vacuum pump after our foundation. Now, the technical division staff design and study the detail of products to meet the various needs of customer based on the long history.



**We are the one company that can meet all your needs, and will continue to create new innovations to support your advanced technology.**

## Development Division

The development division staff is committed to innovation and product development to better meet your expectations, and offer a wide range of high quality products to have your satisfaction.



Customer



## Manufacturing Division

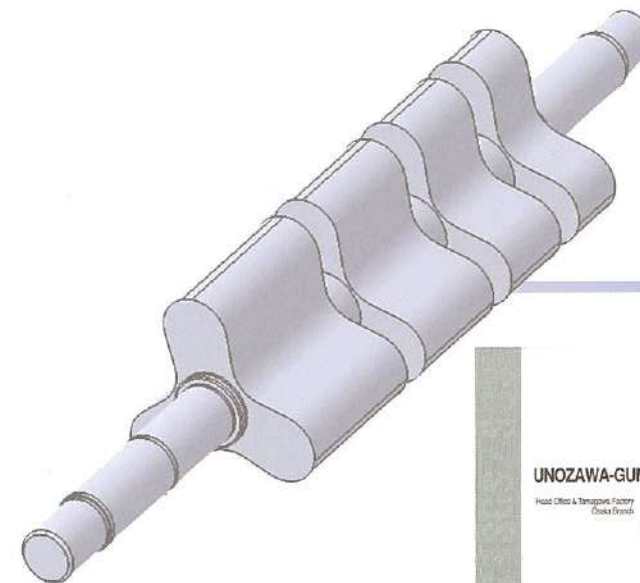
The machine shops are equipped with modern CNC machining centers and 3D inspection machine to obtain the highest quality. The numerical control machines are installed in air conditioned room to ensure accurate machining.



**With long accumulated technology, we will continue expansive steps for the satisfaction of the customer.**

## Quality Control

**Quality Management System ISO 9001: 2000**  
Managing system of manufacturing facilities are certified to ISO 9001 for the following activities.



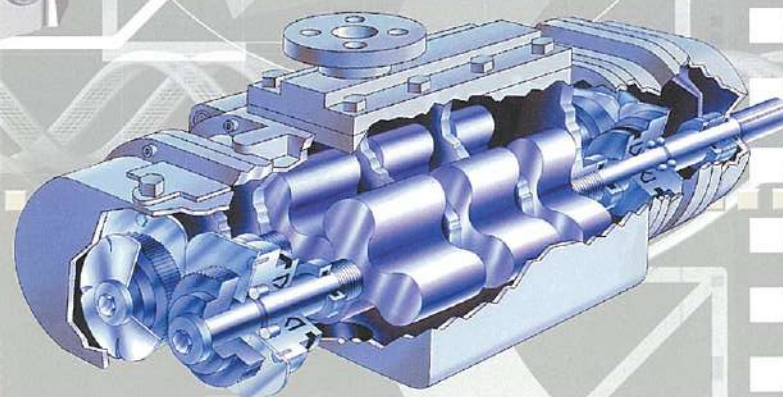
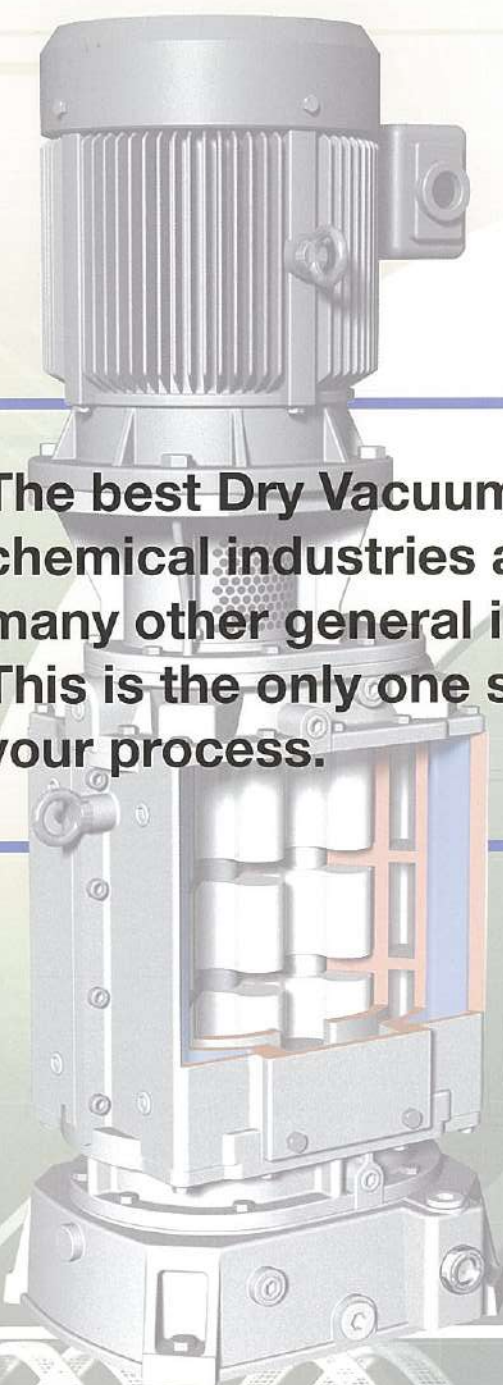
1. Design and manufacture of Positive displacement blower & vacuum pump.
2. Design and manufacture of Dry vacuum pump.
3. Design and manufacture of Vacuum pump & compressor. (Liquid ring type and reciprocating type)
4. Design and manufacture of Pneumatic conveyor.
5. Design and manufacture of Rotary-aerator.
6. Design and manufacture of Vacuum de-aerator.



Customer



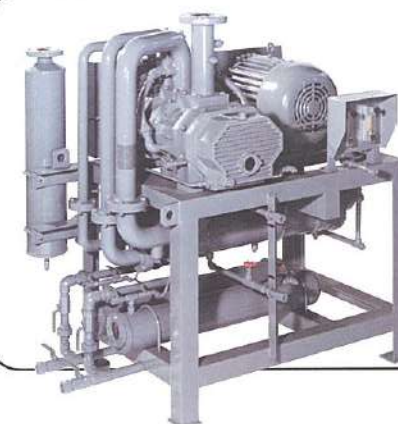
**The best Dry Vacuum Pump for chemical industries and many other general industries. This is the only one selection for your process.**



**DRY VACUUM PUMP**  
Type  
**TRV**

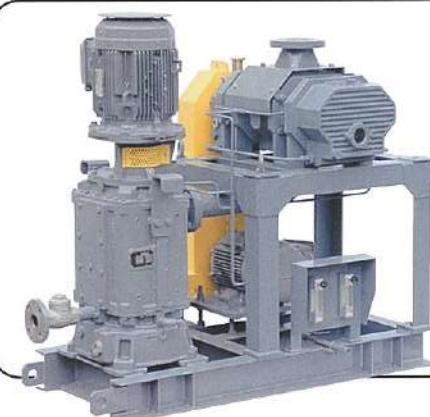
The dry vacuum pump is four stage Roots type and constructed as vertical type. The cooling effect of a high efficiency jacketed pump housing eliminates inter cooler and drain tanks. Top down transportation of gas ensures rapid and complete draining. The pump insures easy solvent recovery in the discharge of the vacuum pump.

The dry vacuum pump is multi-stage Roots type and can be operated completely dry condition. Then it is very strong to handle carry over liquid and ensures easy solvent recovery.



**DRY VACUUM PUMP**  
Type  
**TRM**

The dry vacuum pump is three stage Roots type and constricted as horizontal type with intermediate heat exchangers. The intermediate heat exchangers ensure easy solvent recovery. The all pump equipments are equipped together on a common frame.



**DRY VACUUM PUMP**  
WITH  
**MECHANICAL BOOSTER.**

Using mechanical booster backing by dry vacuum pump, it is easy to make larger pumping speed and higher vacuum level system. We offer the system of model "TAV" and "TAM" which is combined the mechanical booster and dry vacuum pump.



Highly standardized and wide range application blower. It has been improved for over half century.



## THREE LOBE ROTARY BLOWER MODEL ARJ



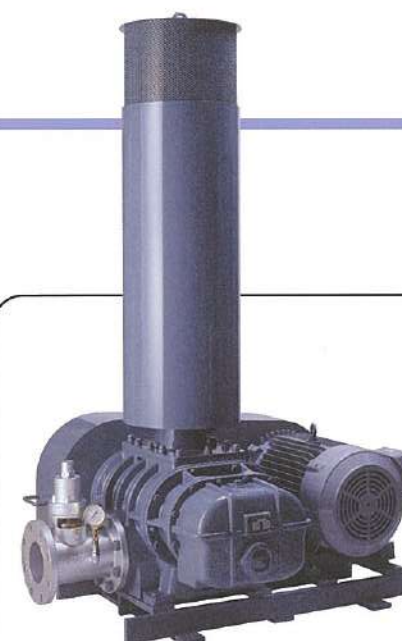
### Heavy-duty blowers

The Positive Displacement Blower "ARJ" series are Roots type heavy duty blower with three-lobe rotor, featuring higher performance, lower noise and less vibration.

### Special design Blower

1. The blower material can be selected from -----  
The blower material can be made of Cast iron, Ductile cast iron, Stainless cast steel, Cast steel and plated inside.
2. The high design pressure blower -----  
The blower can be used for force-feed and circulation of gas. We offer wide range special seal like mechanical seal (Single or Double), and the higher design pressure of blower.

This blower is positive displacement type and developed with long accumulated technology. The blower also can be designed for higher design pressure with mechanical seal in gas circulation process.

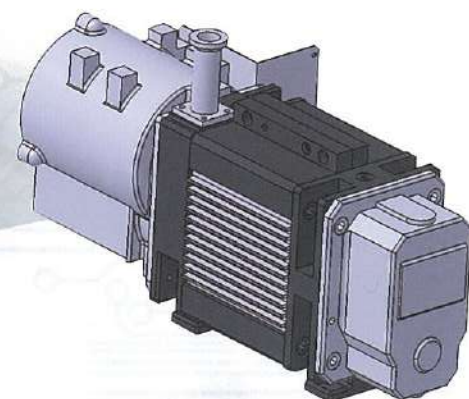


## THREE LOBE ROTARY BLOWER MODEL ARK

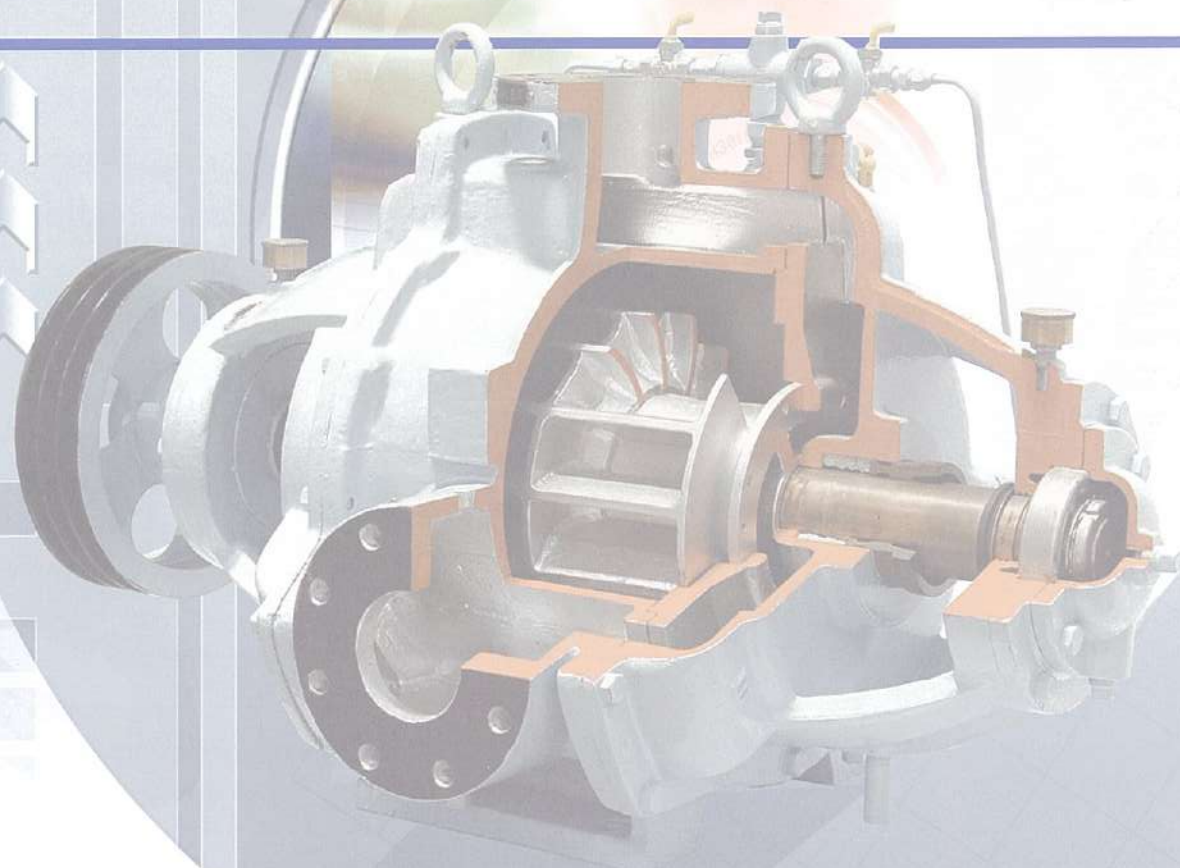
### Conventional blowers

"ARK" series blowers are small and middle sized Roots type, which have three-lobe rotors, realizing high performance, low noise and less vibration. As these series blowers are highly standardized products, deliveries are available in short period.





**We offer the widest range pump series of dry vacuum pump, liquid ring vacuum pump and oil rotary vane pump. We are also your source for mechanical booster, vacuum systems and accessories.**



**DRY VACUUM PUMP  
MODEL  
KTS**

### Air Cooled Dry Vacuum Pump.

- Clean vacuum, completely dry.
- No cooling water required.
- Caned motor provided, no shaft seal.
- Strong to handle carry-over liquid
- Compact dimensions.
- Low sound level.
- 3 Phase 200V, Single phase 200V/100V

For clean vacuum process

[Air cooled dry vacuum pump]

For water containing gas process

[Water ring vacuum pump]

For conventional process

[Oil rotary vane vacuum pump]



**WATER RING  
VACUUM PUMP  
MODEL  
SRH**

### Simple operating water ling pump

- Simple construction.
- High performance.
- Easy maintenance.
- High reliability.
- Special material available
- Special shaft seal available

Using mechanical booster backing by water ring vacuum pump, it is easy to make larger pumping speed and higher vacuum level system.



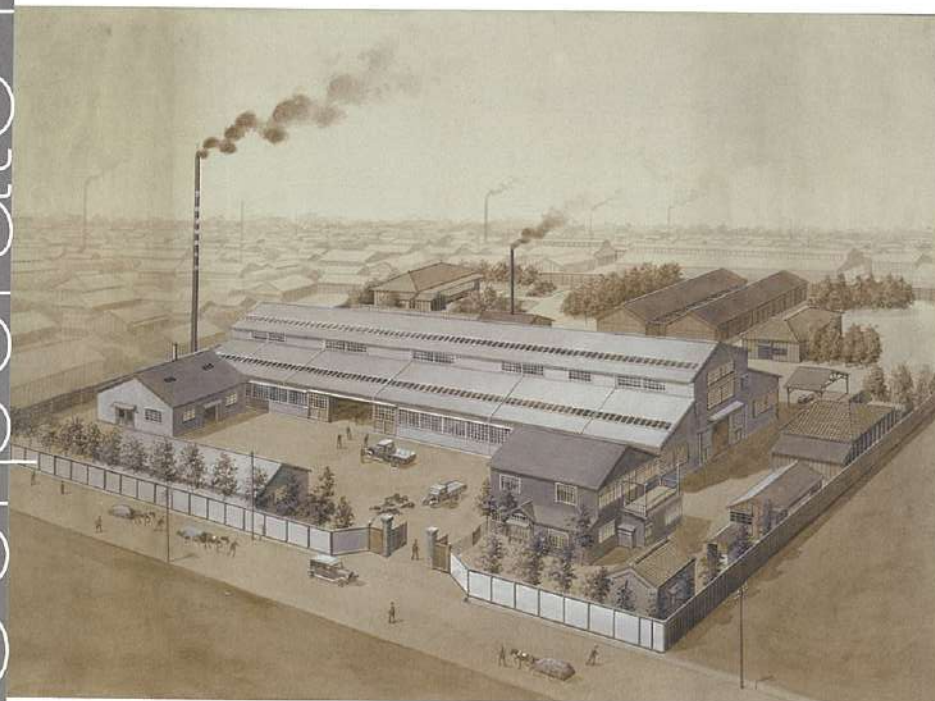
**OIL ROTARY VANE  
VACUUM PUMP  
MODEL  
W2V**

### Two stage oil vane vacuum pump.

- Low ultimate pressure.
- Forced lubrication mechanism.
- Low sound level.
- Gas ballast system inside.
- Easy handling.
- Compact dimensions



## History of the Company



1899 Aug.  
1933 Dec.  
1962 Nov.  
1972 Jan.  
1974 Nov.  
1975 Nov.  
1977 Feb.  
1977 Sep.  
1984 Mar.  
1987 Feb.  
1992 Jan.  
1992 Dec.  
1995 Aug.  
1996 Dec.  
1998 July.  
2007 Mar.

Established in Tokyo.

Corporation as "Unozawa-gumi Iron works, LTD."

Capital increased to 100,000,000 yen. Listed on the Tokyo Stock exchange Part 2.

Technical assistance agreement from Rader Company in USA.(Material handling)

Capital increased to 300,000,000 yen.

Capital increased to 510,000,000 yen.

he laboratory newly established in Tamagawa Factory.

Integrated of Tamagawa & Shibuya factory.

Unozawa-Tokyu Building constructed.

Business cooperation and Technical support to Stokes vacuum.(Dry vacuum pump)

Technical assistance agreement from Gerike in Swiss.

Capital increased to 785,000,000 yen.

Technical transfer to ACC in India. (Rotary blower)

Integrated of Head office & Tamagawa factory.

Certified to ISO 9001.

New head office and facility constructed.





**UNOZAWA-GUMI IRON WORKS,LTD.**

**Head Office & Tamagawa Factory**

36-40, Shimomaruko, 2-chome, Ohta-ku Tokyo 146-0092 Japan

Tel.+81-3-3759-4191 Fax.+81-3-3759-4251

**Sales office**

Tel.+81-3-3759-8101 Fax.+81-3-3759-8105

**Osaka sales**

Sakurabashi yachiyo Bldg., 5-6 Umeda 2-Chome, Kita-ku, Osaka 530-0001 Japan

Tel.+81-6-6344-0747 Fax.+81-6-6344-2405

**Saga Service Center**

1511-1 amarie chiyoda-machi kannzaki city, saga Pref.842-0054 Japan

Tel.+0952-44-6152 Fax.+0952-44-6152

<http://www.unozawa.co.jp>

Official Distributor in Thailand ;

Siam Industrial Machinery Co.,Ltd.

5/15 Moo 6, Km 15 Bangna-Trad Highway,

Bangchalong , Bangplee, Samutprakarn 10540.

Contact Sales : (+66) 02-312-5300#226

Mr.Kirachai Lengudomlap / Sales Department

M : 061-269-9269

Email : kirachaijob@gmail.com and kirachai@siamind.co.th